



ASCENSORE OLEODINAMICO INDIRETTO



PORTATA 480 - 6 PERSONE

PORTE DA 800 TELESCOPICHE

DISEGNO DI
DISPOSIZIONE

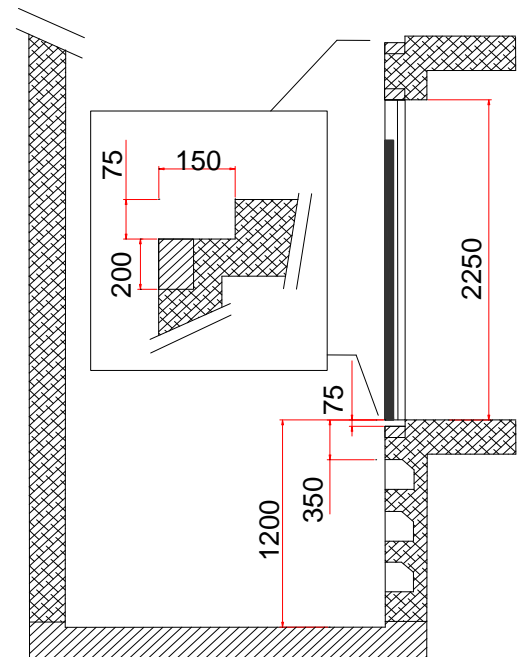
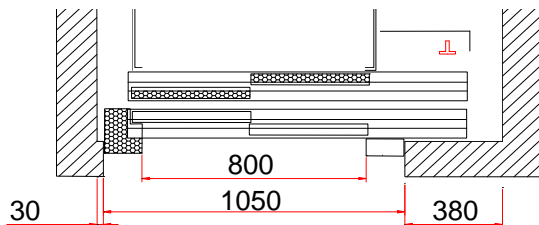
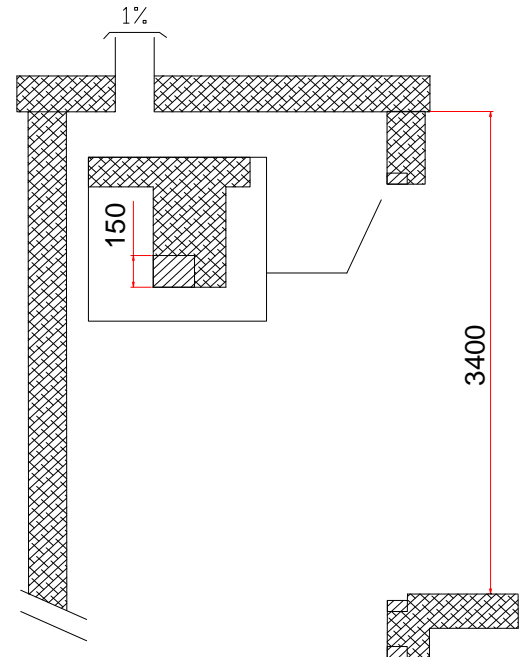
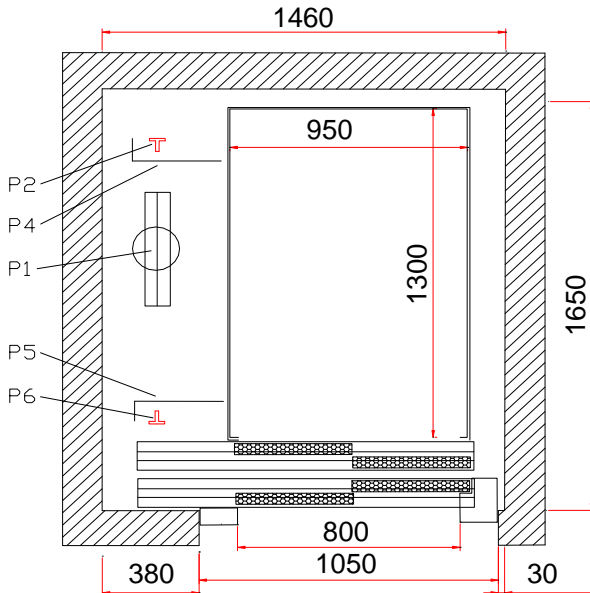
6.80.2T.H

IMPIANTO AUTOMATICO

VELOCITA MAX 1 mt/s

FOSSA 1200 mm

TESTATA 3400 mm



PER INGRESSI OPPOSTI PROFONDITA'
VANO MINIMO 1850

CARICHI

P1 = 3950 Kg IN FOSSA IN CORRISPONDENZA DEL PISTONE

P2 = 1750 Kg }
P6 = 1750 Kg } IN CORRISPONDENZA DELLE GUIDE DI CABINA

P4 = 1650 Kg }
P5 = 1650 Kg } IN CORRISPONDENZA DEGLI AMMORTIZZATORI

REVISIONI

10/02/2006 - D.L.